

Leigh Yawkey Woodson Art Museum

KIMONO | 着物

GARMENT, CANVAS, AND ARTISTIC MUSE



MARCH 1 - JUNE 1, 2025

SUPPORTED BY



KIMONO | 着物

GARMENT, CANVAS, AND ARTISTIC MUSE

The kimono, a traditional garment worn by all genders in Japan for over a millennium, serves as a vibrant canvas showcasing the extraordinary artistry of skilled textile artisans. From intricate weaving and dyeing to delicate painting, printing, and embroidery, each kimono tells a unique story through its remarkable designs. Contemporary artists worldwide are captivated by the kimono's timeless silhouette—reimagining it in a variety of innovative mediums that push the boundaries of conventional interpretation.



This exhibition delves into the profound significance of the kimono within Japanese history and culture, while also highlighting its evolving role to evoke striking design and powerful messaging in contemporary art. The exhibition is organized into three distinct sections: The “Kimono as Garment,” focusing on its traditional wear and cultural importance; “The Kimono as Canvas,” celebrating the vibrant artistry of past and present; and “The Kimono as Artistic Muse,” showcasing how this iconic garment continues to inspire modern creators. Encompassing a diverse collection of forty-six artworks, the exhibition features twenty exquisite kimonos alongside woodblock prints, photographs, and contemporary artworks crafted from materials such as paper, fiber, metal, ceramic, and glass, inviting visitors to explore the kimono’s rich tapestry of creativity.



Kimono: Garment, Canvas, and Artistic Muse and its tour is organized by International Arts & Artists, Washington, D.C. in collaboration with the Curator, Meher McArthur.

(COVER) Itchiku Kubota, *Ohn Fuji and Burning Clouds*, 1994, tie-dye, ink painting, and embroidery on silk crepe (chirimen) with gold wefts, 58 x 60, Image courtesy of the International Chodiev Foundation, © Arneb Holding PTE Ltd.; (RIGHT) Karen LaMonte, *踊り子 Odoriko (Dancer)*, 2011, ceramic, glazed, gold leaf, 48 3/4 x 26 1/4 x 15 3/4, Photographed by Martin Polak, Image courtesy of Karen LaMonte, © Karen LaMonte; (LEFT) Kristine Aono, *Rope Kimono II*, 1996, rope, fabric, DesignCast plaster, wire mesh, Japanese and North American maple leaves, wood, polystyrene, pigment, 58 x 48 x 24, Photographed by Jakrarat “Oi” Veerasarn, Image courtesy of Kristine Aono, © Kristine Aono..

GRIDIRON G A R M E N T S

Leigh Yawkey Woodson Art Museum
MARCH 1 - JUNE 1, 2025



Photo courtesy of the Pro Football Hall of Fame

From the sandlots of small midwestern towns to the domed stadiums of large coastal cities, professional football has evolved in many ways over the past 130 years. One of the more drastic changes has been in the regalia worn by its players.

A pro football uniform has six basic parts: shoes, helmet, pads, jersey, pants, and socks, which were once used mostly for protection and functionality. Now, most of the uniform is also a decorative object, with components designed, marketed, and sold by the millions to fans across the world.

This exhibition, representing a partnership between the Leigh Yawkey Woodson Art Museum and the Pro Football Hall of Fame in Canton, Ohio, chronicles the history of pro football uniform design through player-worn artifacts chosen to represent of the evolution of these “gridiron garments.”

Dudley Foundation

SUPPORTED BY
TRAVEL WISCONSIN



A grant from the Dudley Foundation supports *Gridiron Garments*.



Photo by Vernon J. Biever

FEBRUARY 8 - JUNE 8, 2025

MYTH & FOLLY

Throughout art history, myths have served as a rich source of inspiration, shaping cultural narratives and artistic expression across different civilizations. Animals in particular have long held symbolic significance in mythology, representing powerful forces of nature, deities, and aspects of human experience. Across cultures, different animals are seen as embodiments of strength, wisdom, cunning, or protection, connecting the physical and spiritual worlds. Whether depicted as sacred companions, mythical hybrids, or tricksters, animals in myth help illustrate the relationship between humans and nature, conveying moral lessons and cultural values. *Myth and Folly*, featuring artwork from the Woodson's collection, explores these themes through several different mediums and animal avatars and examines how the use of myth and animals in art allows for the blending of imagination and tradition, offering insight into how these timeless stories inflect modern artistic movements.



MAY 10 - AUGUST 24, 2025

AQUEOUS: PAINTED IN WATER

Immerse yourself in the luminous world of watercolor with *Aqueous: Painted in Water*, an exhibition that celebrates the delicate beauty and expressive depth of this captivating medium. Showcasing an exquisite selection of works from the Museum's collection, this exhibition highlights watercolor's unique ability to convey movement, mood, and atmosphere through the interplay of pigment and fluidity.

From meticulously rendered landscapes that capture the serenity of nature to bold, abstract compositions that push the boundaries of color and form, *Aqueous* invites visitors to explore the rich versatility of

watercolor painting. The exhibition also offers insight into the diverse techniques employed by artists—from traditional wet-on-wet washes to intricate dry-brush detailing—revealing the mastery required to harness the medium's unpredictability.

Whether you are drawn to the spontaneity of impressionistic studies or the emotive power of contemporary abstraction, *Aqueous: Painted in Water* provides a deeper appreciation for the artistry and innovation behind watercolor painting.



(LEFT) Don Stone, *Ruffed Grouse*, ca. 1979, watercolor on paper;
(ABOVE) Leigh Voigt, *Sacred Ibises*, 1996, watercolor on Arches paper

Get Involved

Friday, MARCH 7, 5 - 7 pm

MEMBERS OPENING

Woodson Art Museum members are invited to be some of the first to view *Kimono: Garment, Canvas, and Artistic Muse* and *Gridiron Garments*. Immerse yourself in the art of clothing design with these two dynamic exhibitions along with fellow members and Museum staff.



Interested in becoming a member?

Exhibition openings are one of the many benefits you receive as a Woodson Art Museum member. Learn more about the offerings accompanying a Museum membership and get involved on a deeper level with the institution you love by becoming a member today!



Scan the QR code to learn more about the benefits of Membership

lywam.org/become-a-member/

VOLUNTEER AT THE MUSEUM

The Woodson Art Museum relies on volunteers to provide an excellent experience for every visitor that walks through our doors. Whether you're interested in leading tours, assisting with children's programming, or greeting visitors at the Museum, there's a volunteer position for you!

- ▶ **Docents** are responsible for leading tours and hands-on artmaking for groups of all types. Volunteer docents participate in a six-week training course followed by several shadowing opportunities.
- ▶ **Greeters** welcome visitors, provide general information about the Museum, and answer basic questions regarding the institution and current exhibitions. Greeter training is one-on-one with a staff member, followed by several shadowing opportunities.

Both docents and greeters enjoy regular exhibition-based training sessions, volunteer appreciation events, and opportunities to connect with other dedicated volunteers. **For more information, email scheduling@lywam.org or call 715-845-7010.**



Emerging Artists

MARCH 15 - APRIL 27, 2025

STUDENT ART EXHIBITION

Celebrate Youth Art Month and view artwork by central and north central Wisconsin students in grades 5 - 8 in the *48th Annual Student Art Exhibition*. This exhibition highlights the original and creative efforts of students in public, parochial, and home schools.



Saturday, APRIL 12, 1 pm

EKPHRASTIC POETRY READING

The Student Ekphrastic Poetry Competition is presented by the Woodson Art Museum in collaboration with the Wisconsin Fellowship of Poets (WFOp).

In celebration of National Poetry Month, winning ekphrastic poems written by Wisconsin high school students are read aloud and displayed alongside the permanent collection artworks that inspired them. A Wisconsin Fellowship of Poets representative joins Amalia Wojciechowski, the Museum's assistant director and collections curator as well as contest juror, for thoughts on the written and visual artworks selected.

(LEFT) Artwork from the *46th Annual Student Art Exhibition*;
(BELOW) David F. Driesbach, *And a Blue Footed Boobie* (9/20),
2000, engraving on Rives BFK paper; David Kroll, *Landscape (Rose
Vase)*, 2019, oil on canvas on board; Theodore Robinson, *Child with
Geese*, 1886, oil on canvas



WISCONSIN
FELLOWSHIP
of
Poets

MARCH 29 - APRIL 27, 2025

PORTFOLIOS

Wausau East High School International Baccalaureate (IB) art students collaborate with Wausau West High School Advanced Placement (AP) art students to present highlights from their respective art portfolios—the result of rigorous program curricula. Enjoy the diverse and impressive artwork created by local high school students in this collaborative exhibition.



PORTFOLIOS
Advanced Art from Wausau East & West

(ABOVE) Sadie Peissig, *Dress Up*, 2024, colored pencil; Kassy Havel, *Off Seeing*, 2023, oil on canvas; Ella Schmelling, *Naaltsoos Yázhí*, 2024, charcoal, clay, acrylic, nail polish, eyeshadow; Ana Sewall, *Ruby*, 2024, monotype print on paper; Kate Saari, *A Folded Memory*, 2024, pastel and chalk pencil

Saturday, MARCH 29, 1 - 3 pm
EMERGING ARTISTS RECEPTION
Student Art & Portfolios

Congratulate and nurture young artists during this joint reception and celebrate the creativity in our community! Explore art from students in grades 5 - 8 in the *48th Annual Student Art Exhibition* and Wausau area high schoolers in *Portfolios*. Refreshments served.

Spring Programs

Saturdays, 1 – 3 pm

MARCH 1, APRIL 5, MAY 3

ART PARK OPEN STUDIO

Stop by the lower-level classroom studio for family friendly hands-on projects guided by members of the Wisconsin Valley Art Association.



Thursday, **MARCH 6, 6 pm**

MYTH & FOLLY GALLERY WALK

Legend has it that the crow is a shapeshifter and the owl a symbol of wisdom. Join assistant director and collections curator Amalia Wojciechowski for a gallery walk of *Myth and Folly* to explore these stories and more. Look at the legends and myths of the natural world through the Museum's collection and learn about how the appearance and behavior of birds has helped to create the myths that have grown up around them.

(ABOVE) Millie Whipplesmith Plank, *Am I Real* (2 of 25) (detail), 2022, woodcut on Torinoko paper; (RIGHT) Photo by Vernon J. Biever

DROP-IN ART MAKING

@ The Glass Box Studio

Drop-in to the Glass Box Studio to participate in a free, vibrant creative community on Tuesdays, Wednesdays, and Fridays from 1 – 3 pm. Bring your own project to work on in our collaborative space or explore free materials associated with the studio's monthly theme.

Tuesdays, Wednesdays & Fridays,
1 – 3 pm

**MARCH
COLLAGE**

**APRIL
ZINES**

**MAY
WATERCOLOR**

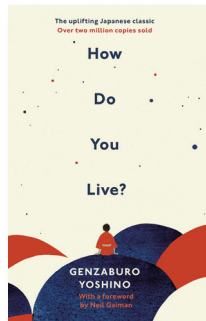
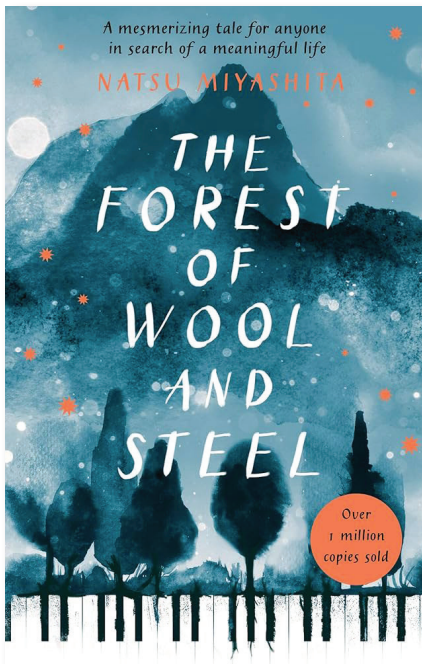


Thursday, **APRIL 3, 6 pm &**
Sunday, **APRIL 27, 1 pm**

GALLERY HUDDLE

Woodson Art Museum director Matt Foss shares insights into the pro football uniforms on display in *Gridiron Garments*. He'll discuss the evolution of uniform design and how it fits into the narrative of pro football history.





Select Fridays, 5 - 6 pm

NOVEL NOTIONS

Join monthly conversations as part of a book club program hosted in the galleries with discussions led by youth and family program manager Emily Wesenick. From novice readers to avid bookworms, all are welcome to join. Book selections will draw from a wide range of genres and interests.

MARCH 28

FOREST OF WOOL AND STEEL

By: Natsu Miyashita with Phillip Gabriel (translator)

APRIL 25

BUSHIDO: THE SOUL OF JAPAN

By: Inazo Nitobe

MAY 30

HOW DO YOU LIVE?

By: By Genzaburo Yoshino with Bruno Navasky (translator)

Saturday, **APRIL 5**, 12 - 1 pm

SLOW ART DAY

Join a worldwide art appreciation effort to slowly examine a few selected artworks. Learn more at www.slowartday.com.

Saturday, **MAY 10**, 1 - 2:30 pm

KEEPING A BIRD-FRIENDLY YARD

Learn what native Wisconsin plants you can add to your yard, patio or balcony to attract birds and help save our declining songbird populations. Take home gardening and landscaping tips for creating a bird-friendly outdoor environment. Attendees will receive a free plant courtesy of Johnson's Nursery of Menomonee Falls in this special program from SOS (Save Our Songbirds), the Wisconsin Society for Ornithology, and other community partners.



Saturday, **MAY 17**, 1 - 4 pm

MYTH MAKING

Tabletop Roleplaying

Interested in telling your own myth? A big fan of *Stranger Things* or *Critical Role*? Join us for a TTRPG (Tabletop Roleplaying Game) session at the Museum inspired by the exhibition *Myth and Folly*. Experienced Game Masters will lead a two-to-three-hour "one-shot" session where you can tell your own story at the game table alongside other players. Explore *Dungeons and Dragons 5e* or branch out with new storytelling systems like a simplified D&D-lite system made for beginners and indie favorite *A Quiet Year*. Brand new and experienced players alike are invited to join and materials to play will be provided. Teens & up are welcome! **Registration is required.** The event is free to attend. Register online or call 715.845.7010



Spring Workshops



Saturday, **APRIL 5**, 10 am - 3 pm

SASHIKO WORKSHOP

Inspired by the artistry of kimonos, immerse yourself in the art of sashiko stitching in a hands-on workshop with Museum staff members Emily Wesenick and Shannon Pueschner. Novice and experienced stitchers alike will craft their own palm thimble, explore the fascinating history of boro and sashiko, and create a one-of-a-kind furoshiki tie bag adorned with traditional sashiko patterns. Join us at the Glass Box Studio for a creative and meditative experience, where you'll connect with the rich cultural tradition of Japanese textile arts.

Registration is required. Fee: \$50 for Museum members, \$65 for non-members; includes all materials and a meal. Register online or call 715.845.7010. Scholarships available.



DRAWING BASICS

Five-Part Workshop Series

Take this introductory course at the Glass Box Studio taught by Museum staff members Rachel Hausmann-Schall and Dave Jones to sharpen your drawing skills. Learn important concepts during this five-part class that will create a strong foundation of drawing techniques beneficial for any artistic practice. Each two-hour session will focus on a different theme and underscore the importance of working from life. No previous drawing experience necessary; perfect for teens, adults, and beginners. **Registration is required. Fee: \$125 for Museum members, \$150 for non-members; includes all five classes, materials, and meals for each session. Register online or call 715.845.7010. Scholarships available.**

Tuesdays, 5:30 - 7:30 pm

APRIL 15

PART 1: Mark Making & Gesture

APRIL 22

PART 2: Proportion & Negative Space

APRIL 29

PART 3: Light & Shadow

MAY 6

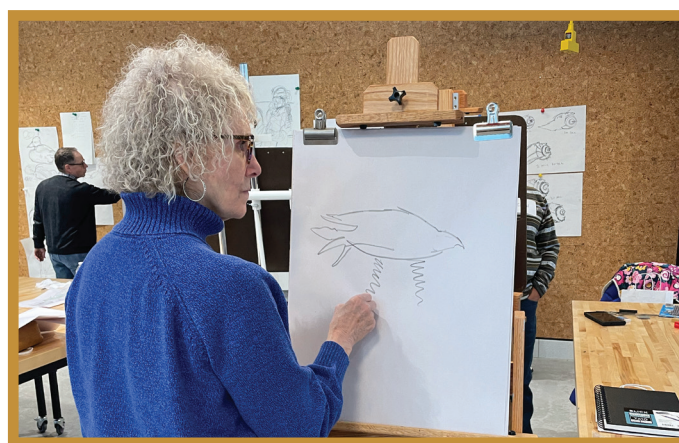
PART 4: Human Subjects

MAY 13

PART 5: Theory & Critique



Register for Museum programs
online! Scan the QR code or visit
lywam.org/learn-do/program-registration



Accessible Programs



Saturday, **MAY 17**, 10:30 am – Noon

ART BEYOND SIGHT

Kimono

Individuals with low vision and blindness explore *Kimono* via a multisensory gallery experience led by Museum educators. Time in the galleries is followed by conversations and hands-on making in the lower-level classroom. Register online at lywam.org/learn-do/program-registration or call 715.845.7010.

WE WANT TO SERVE YOU

To schedule a specialized SPARK! or Art Beyond Sight experience, contact scheduling@lywam.org or call 715.845.7010.



SPARK!

CREATIVE ENGAGEMENT PROGRAMS for PEOPLE
WITH MEMORY LOSS and THEIR CARE PARTNERS

Adults with early-to-mid-stage memory loss and their care partners gather for interactive, multi-sensory experiences in the galleries followed by hands-on art making inspired by observations and conversations. Register online at lywam.org/learn-do/program-registration or call 715.845.7010.

Select Thursdays, 10:30 am – Noon

MARCH 13

KIMONO

APRIL 10

PORTFOLIOS

MAY 8

GRIDIRON GARMENTS



Programming for adults with memory loss is generously supported by Abbie Spire in memory of Dr. Lyman J. Spire.

Sign Up Now!



IMAGE INSPIRATION

Summer Art Sessions for Children

Taking inspiration from exhibitions on view, including *Sacred Nature* and *Double Exposure: Community Portraits*, young artists will experiment with photography techniques and image-inspired making during Summer Art Sessions. Activities take place in the Museum's classrooms, Glass Box Studio, and Sculpture Garden.

Younger artists, ages 5-8, will experiment with photcollage techniques, craft a wearable piece of art or "prop" to use in their photographs, and construct a collaborative, image-inspired monolith.

Artists, ages 9-12, will build pinhole cameras, learn image transfer techniques, create a collaborative photo backdrop, and work together to develop a "set" to take photographs in.

Tuesday & Wednesday JULY 8 - 9, 9 am - Noon

Ages 5 - 8

Tuesday & Wednesday, JULY 15 - 16, 9 am - 3 pm

Ages 9 - 12

REGISTER NOW

Fee: \$60 for Museum members; \$85 for non-members. Register online or call 715.845.7010. Scholarships available.





Art Babies: 2 years & under



Creative Explorers: 2 to 4 years



Art Buds: 5 to 8 years

Art Kids: 8 to 12 years



ART BABIES

For Kids 2 Years & Under

Bring your littlest artists for an hour of learning-infused fun, sensory exploration, and socializing inspired by *Kimono: Garment, Canvas, and Artistic Muse* in the Museum's galleries and Art Park. Prams, strollers, and front packs are welcome. **Register online or call 715.845.7010.**

Select Tuesdays, 9 - 10 am

MARCH 25

FABRIC FROLIC

APRIL 29

BOUNCING BEATS

MAY 27

DOT DISCOVERY





CREATIVE EXPLORERS

For Kids 2 – 4 Years

Toddlers and accompanying adults explore art through movement and hands-on projects.

Register online or call 715.845.7010.

Select Fridays, 10:30 – 11:30 am

MARCH 28

WORLD TRAVELERS

Add a stamp to your passport as we travel to Japan! Explore the rich history of printmaking and discover iconic landmarks like cherry blossoms and Mount Fuji. Inspired by *Kimono: Garment, Canvas, and Artistic Muse*, toddlers will dive into the vibrant world of Japanese art and culture through storytelling and hands-on creativity.

APRIL 25

TOUCHDOWN TOTS

Inspired by *Gridiron Garments*, Creative Explorers will step onto the field of creativity, crafting their own uniforms and helmets through hands-on making and sensory experiences. Discover how art and sports collide, sparking imagination and inspiring one-of-a-kind game-day gear!

MAY 30

TACTILE TREASURES

Get ready for a sensory adventure inspired by the textured artwork of Japanese artists Ruth Asawa, Bernice Bing, and Pacita Abad! From squishy sculptures to colorful patterns, dive into the world of art, sculpture, and color while celebrating the joy of making together.

Thursday, **MAY 8**, 4:30 – 6 pm

ART BUDS – INK IMAGINATION

For Kids 5 – 8 Years

Explore the ancient art of water drawing and traditional scroll artwork! Unleash your creativity as you experiment with fluid brushstrokes and temporary designs, bringing vibrant stories to life through this unique and relaxing technique.

Register online or call 715.845.7010.

Thursday, **APRIL 3**, 4:30 – 6 pm

ART KIDS – ZEN TEA SETS

For Kids 8 – 12 Years

Emerging artists will explore the art of clay as they design and create their very own tea sets. Learn basic pottery techniques to shape and mold teacups, saucers, and teapots while expressing unique creativity through functional art.

Register online or call 715.845.7010.



Register for Museum programs
online! Scan the QR code or visit

lywam.org/learn-do/program-registration



700 North 12th Street
Wausau, WI 54403-5007 USA

Non-Profit
U.S. POSTAGE
PAID
WAUSAU,
WISCONSIN
Permit No. 694

RETURN SERVICE REQUESTED

ACKNOWLEDGEMENTS

Kimono: Garment, Canvas, and Artistic Muse and its tour are organized by International Arts & Artists, Washington, D.C. in cooperation with the Curator, Meher McArthur. Wausau Homes is a presenting sponsor.

A grant from the Dudley Foundation supports *Gridiron Garments*.

The Woodson Art Museum thanks members, donors, grantors, and sponsors who support exhibitions and programs. Additional educational support comes from William and Brenda Everson, and Pamela and Gary Frary.



WEEKLY BLOG: WOODSON WANDERINGS

EXHIBITION EXTRAS

Art Park

Experiment with oversized fiber-based activities while learning about Japanese symbolism and artistic influences. Create your own kimono-inspired artwork in the Museum's interactive family-friendly gallery.

Pop-Up Possibilities

Watch for additional opportunities to look, learn, and make. Follow the Museum on social media for details; Museum members will receive email notices.

Art Kits & Stop-by-Studio

Pick up Art Kits—free, take-and-make art materials for all ages—in the Museum or from the always-open Stop-by-Studio, for in-gallery or at-home art making. Art Kits are supported by a grant from the M&T Charitable Foundation and Wilmington Trust.

Learn More

Explore additional educational content like Activity Guides and videos during your visit and online at www.lywam.org/learn-do/digital-resources.

MUSEUM HOURS

Tuesday - Friday 9 am - 4 pm
First Thursday of each month 9 am - 7:30 pm
Saturday - Sunday Noon - 5 pm
Closed Monday and holidays, including Easter

CONTACT US

Phone: 715.845.7010
Email: info@lywam.org
Online: www.lywam.org

CONNECT WITH US

& Share Your Images

