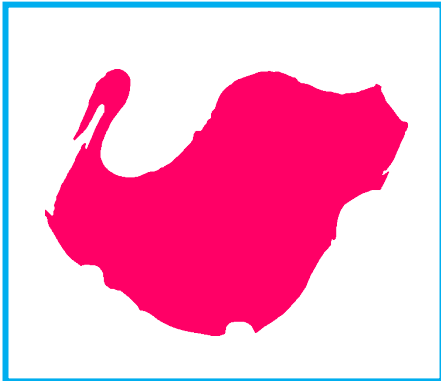


# FROM BLOB TO BIRD



“If I sit and stare at a painting that I am working on in my studio long enough or from enough different angles, forms begin to emerge.” - Charles Compo



SHAPE



BIRD OUTLINE



FINISHED WORK

Examine Charles Compo's painting *Swan Lake* in different stages. How does he utilize the shape he created with the oil paints to allow the bird to take form?



## WET-ON-WET →

Water down the paper and apply wet paint. This technique is perfect for developing color gradients.



## ← WET-ON-DRY

Apply wet paint onto dry paper. Use this technique to achieve crisp lines.

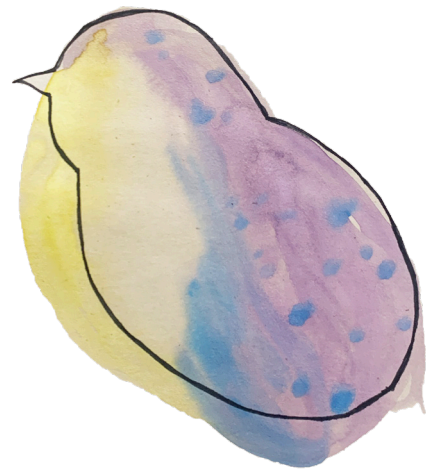
(ABOVE) Charles Compo, *Swan Lake*, 2023, oil on canvas

# MAKE YOUR OWN WATERCOLOR MASTERPIECE!

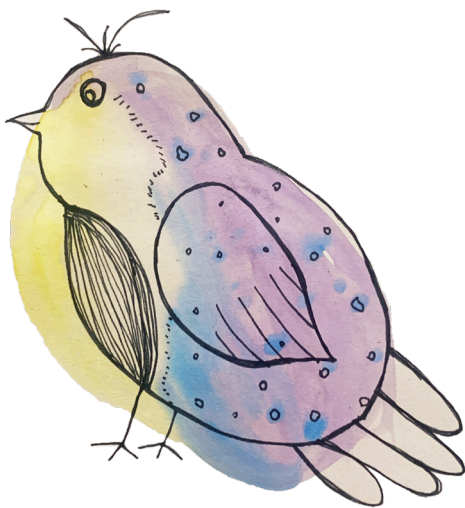
1. Paint 1 to 2 watercolor shapes on each piece of paper. Experiment with a variety of geometric shapes like circles and ovals or try abstract shapes.



2. Take a step back and get a bird's eye view. Can you see the beak? What about the body? Can you see the wings, feet, or head?



3. Use the black pen to outline the elements of a bird on top of the watercolor shapes.



SHARE YOUR ARTWORK WITH US!



SUPPORTED BY



ART KITS courtesy of the  
Woodson Art Museum  
Education Department

